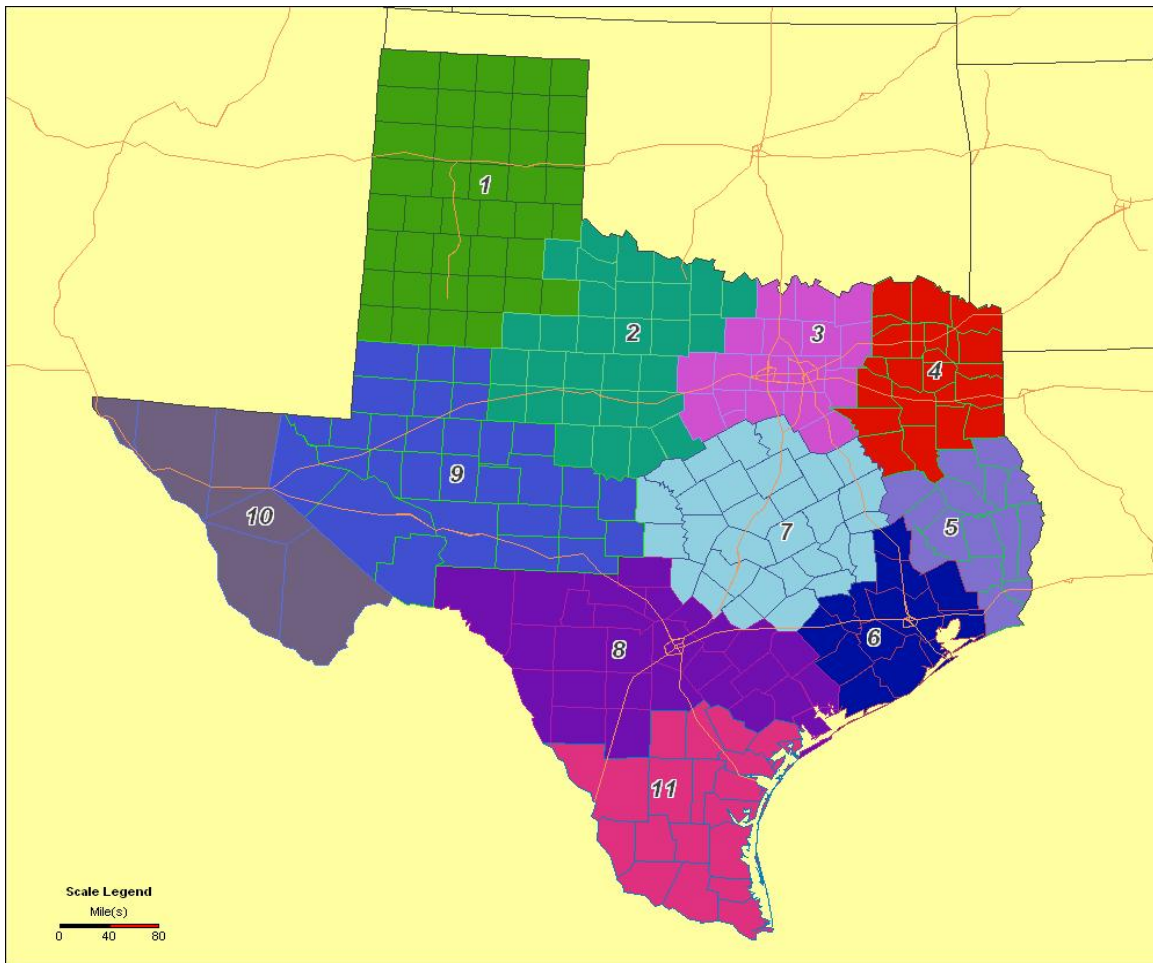


Behavioral Assessment, Inc.

**Texas Department of State Health Services
Texas State Prevention Framework
State Incentive Grant**

**2006 Texas Public Health
Regional Needs Assessments**



Texas Public Health Regional Needs Assessments

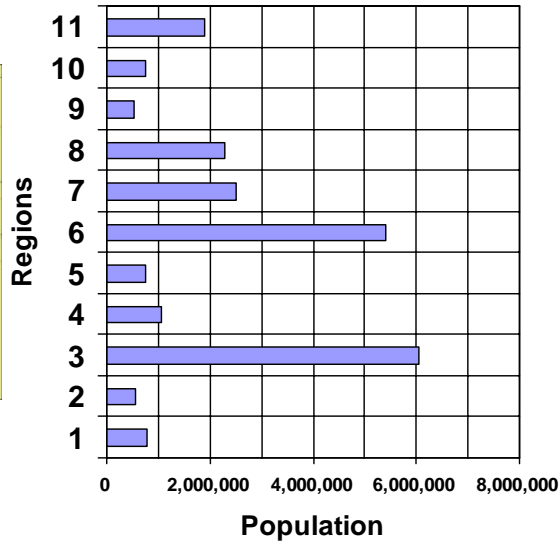
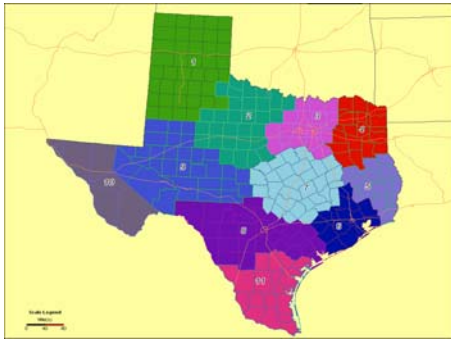
The Center for Substance Abuse Prevention (CSAP) of the US Department of Health and Human Services awarded the Texas Department of State Health Services (DSHS) a State Prevention Framework (SPF) State Incentive Grant (SIG). The grant mandates epidemiological data related to substance abuse to be assembled at state and local levels.

At the state level an epidemiological work group including leading Texas substance abuse, mental health, criminal justice, and educational data experts gathered and analyzed statewide data that were used in formulating the state’s SPF SIG prevention plan.

To further identify available epidemiological data related the Texas SPF SIG, Behavioral Assessment, Inc. (BAI) the TX SPF SIG evaluation contractor, organized a team of Texas prevention program evaluators. Each member of the team in collaboration with Prevention Resource Centers (PRC’S) in each of the state’s eleven public health regions conducted focus groups in each region. They also assembled key epidemiological data elements for each region. The following are summaries by region of the regional needs assessment team’s findings.

DSHS Health Regions 2004 Population

Total Population: 22,594,568

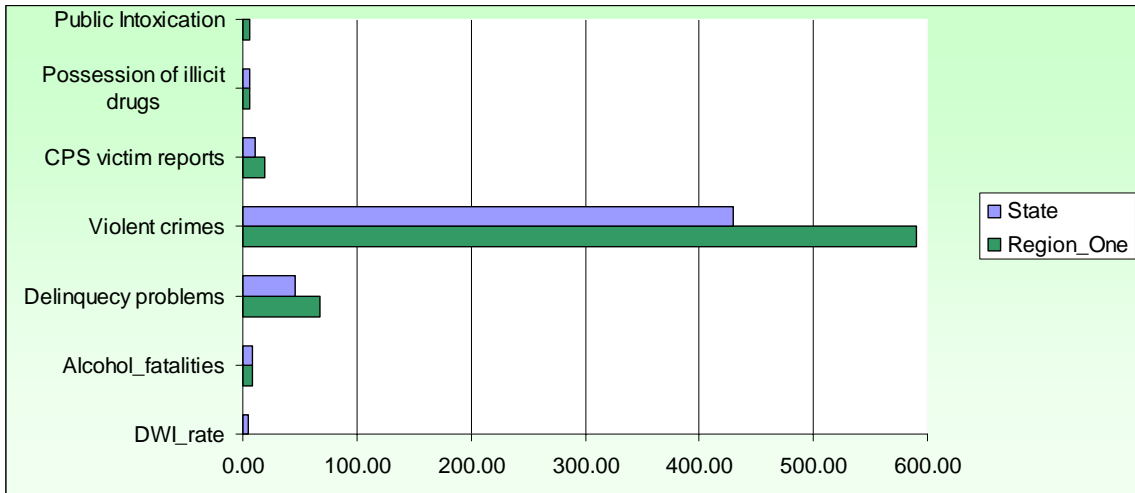
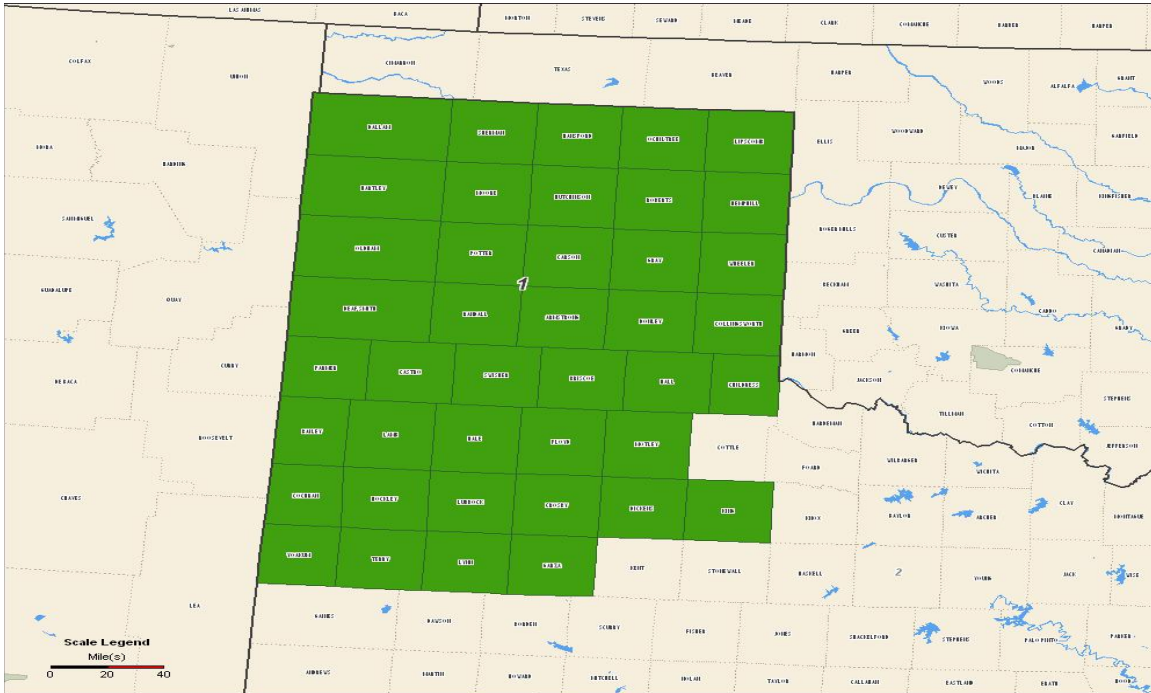


- Region 1 – LUBBOCK
- Region 2 – ABILENE
- Region 3 – DALLAS
- Region 4 – LONGVIEW
- Region 5 – NACOGDOCHES
- Region 6 – HOUSTON
- Region 7 – SAN MARCOS
- Region 8 – SAN ANTONIO
- Region 9 – ODESSA
- Region 10 – EL PASO
- Region 11 – CORPUS CHRISTI

DSHS Health Regions and Prevention Resource Centers (PRC)

Each of the 254 Texas counties is assigned to one of 11 public health regions. The Department of State Health Services (DSHS), formerly the Texas Commission on Alcohol and Drug Abuse (TCADA), established Prevention Resource Centers (PRC'S) in each of the state's public health regions. Prevention Resource Centers enhance and support local and statewide prevention efforts by providing local communities with a source of prevention materials, information and expertise. To update the Prevention Resource Centers prevention efforts, DSHS is sharing the Texas State Prevention Framework (TX SPF SIG) with the PRC'S. The first step was to expand the state's epidemiological needs assessment to include special focus on needs within each of the 11 public health regions.

TX Public Health Region One



TX Public Health Region 1

Texas Department of State Health Services Region 1 includes 41 counties of the Panhandle and South Plains of Texas, including 39,504 square miles. The region had a 2004 population of 791,835 (a population density of 20.42), of which 75.8% were White, 5.7% were African-American, 16.1% Other Race, and 31.6% were of Hispanic ethnicity.

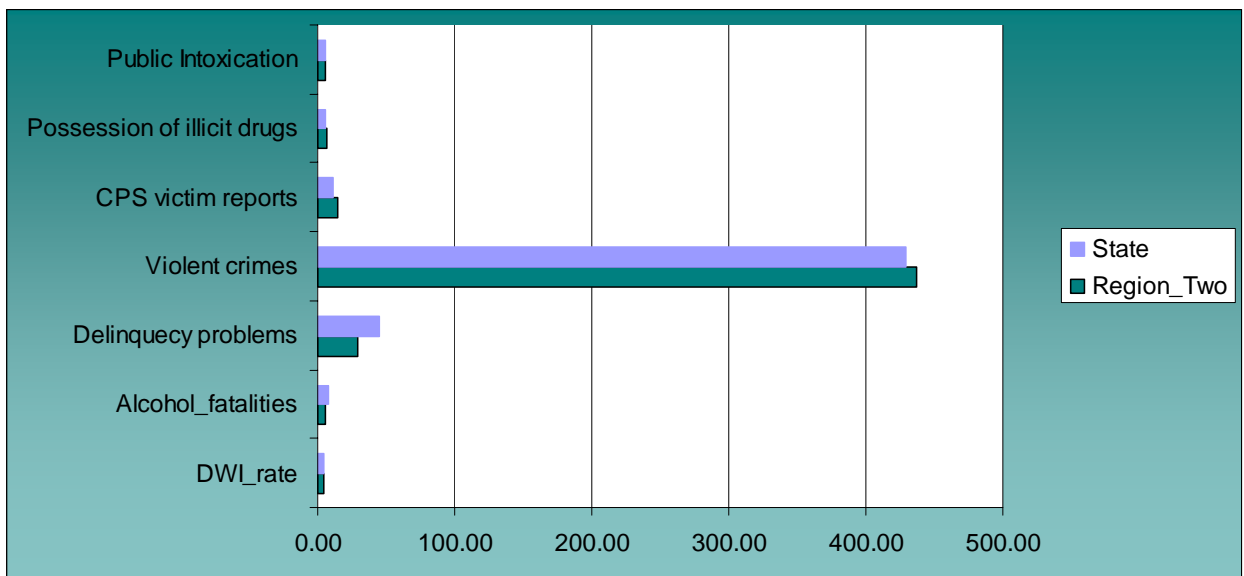
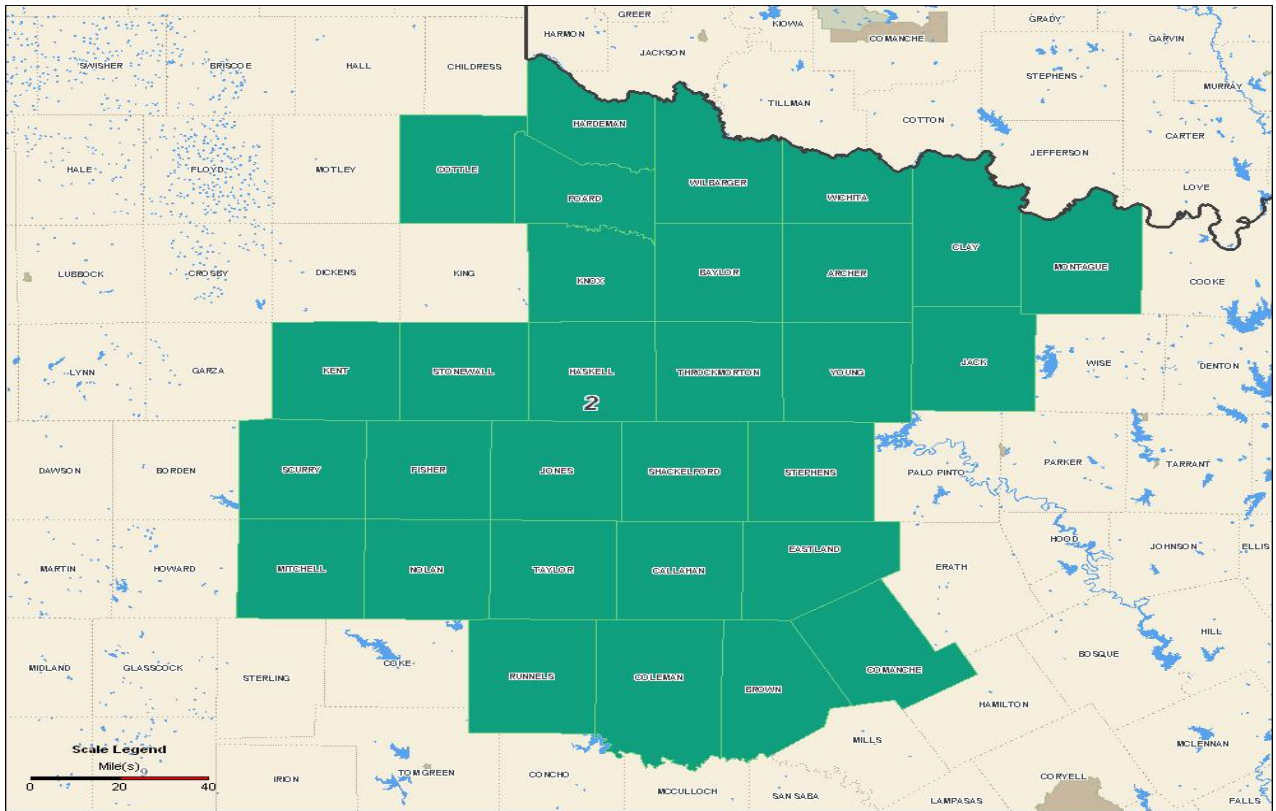
Findings

Indicator Data Element	Data Element Description	Regional Level
2004 Population	Sum of 2004 Census figures for counties in region	791,835
DWI rates (/ 1,000 pop.)	Total DWI Arrests in region * 1,000 / region pop.	5.89
Alcohol related vehicular fatalities (/ 1,000 pop.)	Total Fatalities in region * 1,000 / region pop. [Per 100,000 pop were used, because per 1,000 left a very small number]	20.84
Youth delinquency/school behavior problems	Juvenile referrals for "liquor" and "dangerous drugs" per 100K pop.	6.74
Violent crimes per year	Total violent crimes in region * 100,000 / region pop.	590.1
Family/social bonding indicator	CPS victims per 1,000 children	19.5
Possession of illicit drugs	Total arrests for possession of illicit drugs * 1,000 / region pop.	6.1
Public Intoxication	Total arrests for public intoxication * 1,000 / region pop.	5.6

Region 1 Focus Groups

- 15 participants, mostly White, mostly community stakeholders
- Most cited underage & binge drinking, drunk driving/DWI's as major alcohol-related issues
- Contributions to alcohol-related car crashes were underage drinking, drinking to get drunk, DWI, large student population (Texas Tech)
- Social norms that encourage: family history, limited parental supervision or parents don't believe drinking is a problem, cowboy culture, rite of passage, lack of alternative activities
- Social norms that discourage: family and church values, education programs, laws, active law enforcement, control of alcohol sales
- Most thought that young people drink & drive because they don't know/acknowledge consequences
- All respondents reported alcohol is easily available: Fake ID's, bought by older siblings/peers/parents/relatives/other adults, obtained at parties
- Most respondents thought the laws, alcohol code violations, and DWI are as well enforced as possible, given limited law enforcement staff
- Most said young people are aware of the consequences, but don't believe they will suffer them
- There were mixed responses about different cultural expectations. 2/3 believed there were, but 1/3 believed there weren't.

TX Public Health Region 2



TX Public Health Region 2

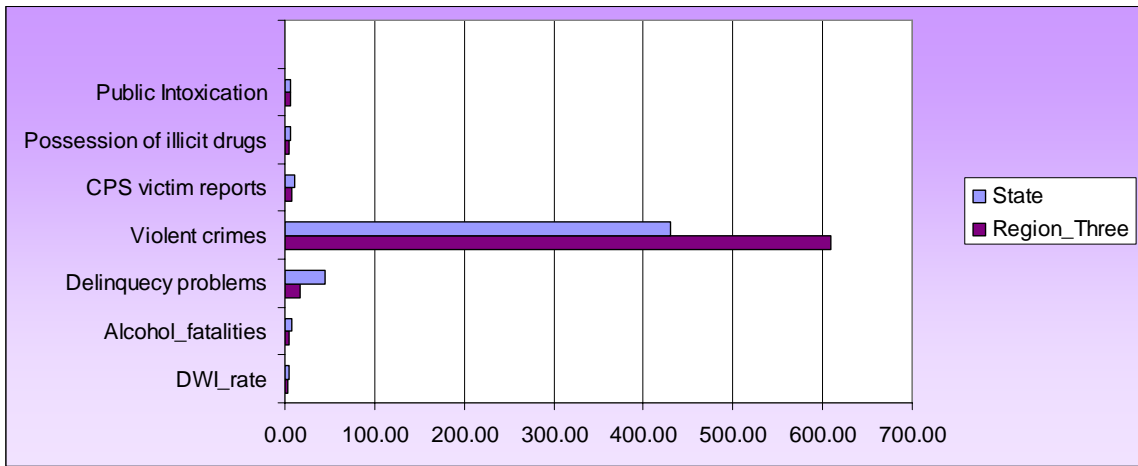
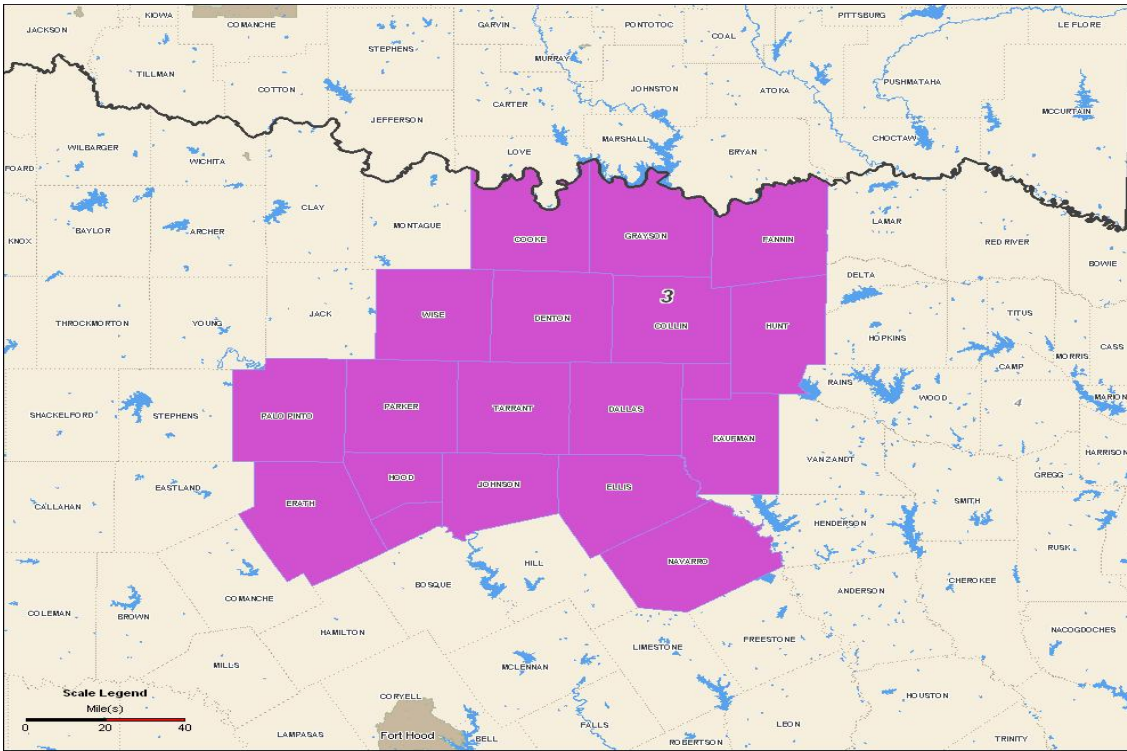
Indicator Data Element	Data Element Description	Region 2
2004 Population	Sum of 2004 Census figures for counties in region	545,646
DWI rates (/ 1,000 pop.)	Total DWI Arrests in region * 1,000 / region pop.	4.76
Alcohol related vehicular fatalities (/ 1,000 pop.)	Total Fatalities in region * 1,000 / region pop.	0.06
Youth delinquency/school behavior problems	Total delinquencies per 1,000 children	29.65
Violent crimes per year	Total violent crimes in region * 100,000 / region pop.	436.73
Family/social bonding indicator	CPS victims per 1,000 children	29.49
Possession of illicit drugs	Total arrests per 1,000 people	6.62
Public Intoxication	Total arrests per 1,000 people	6.05

Region 2 Focus Groups

Participants agreed that alcohol was not really a problem on the base or in the community. They said the base had programs to help individuals who may have a problem with alcohol use. Participants from the Parent group stated that alcohol is being consumed at all ages. Elderly are drinking early in the day. Children are drinking at younger ages (8-9 years old). Participants from the Boys and Girls Club group listed several ways that they feel alcohol affects their community:

- Trash thrown on the side of the road (beer cans/bottles)
- Teens steal alcohol from parents' refrigerators
- People get into fights when they drink too much
- Adults drinking and driving causes accidents
- Teens drinking and driving because they fear calling home and getting in trouble.
- Teens drink too much and get drunk because they do not know when to stop.
- Teens do it because "Everyone else does."
- 30-40 year olds have the worst problem with alcohol. (This was determined by what they see from older family members)

TX Public Health Region 3



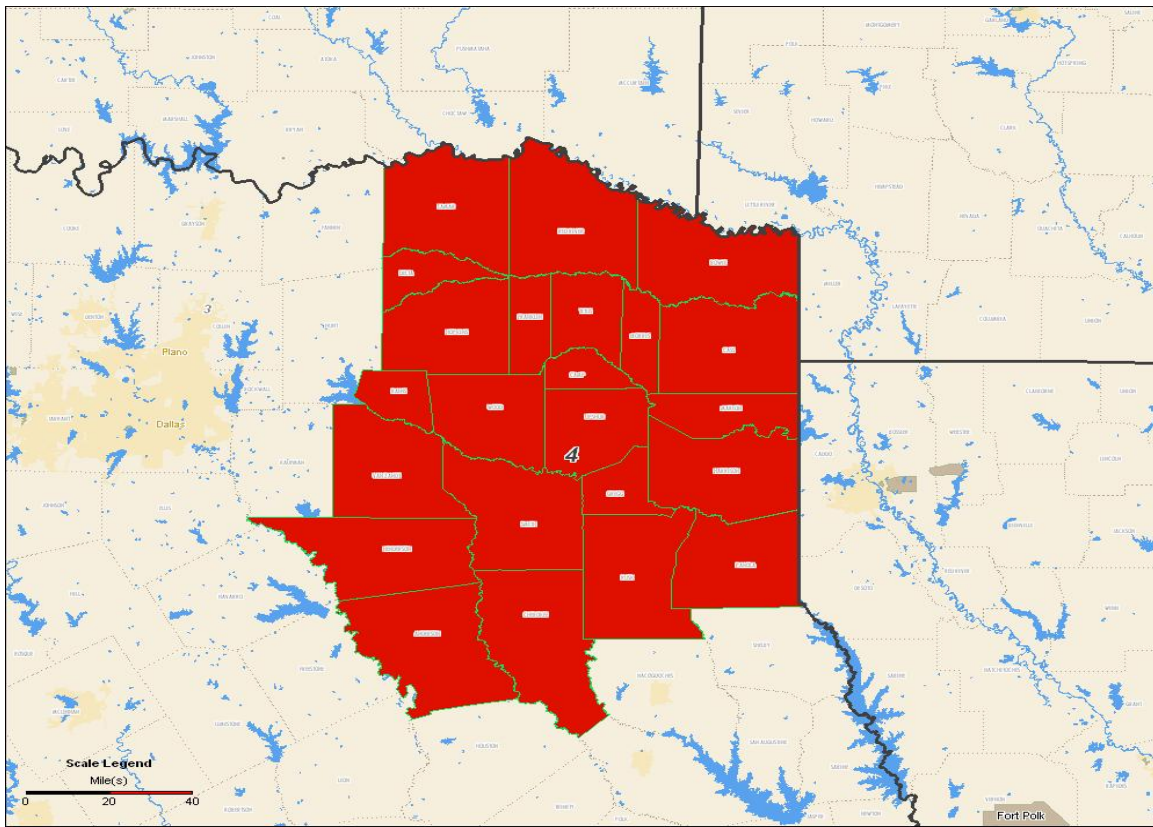
TX Public Health Region 3

Indicator Data Element	Data Element Description	Region 3
2004 Population	Sum of 2004 Census figures for counties in region	6,042,069
DWI rates (/ 1,000 pop.)	Total DWI Arrests in region * 1,000 / region pop.	3.75
Alcohol related vehicular fatalities (/ 1,000 pop.)	Total Fatalities in region * 1,000 / region pop.	0.05
Youth delinquency/school behavior problems	Total delinquencies per 1,000 children	15.52
Violent crimes per year	Total violent crimes in region * 100,000 / region pop.	608.32
Family/social bonding indicator	CPS victims per 1,000 children	6.91
Possession of illicit drugs	Total arrests per 1,000 people	3.88
Public Intoxication	Total arrests per 1,000 people	6.53

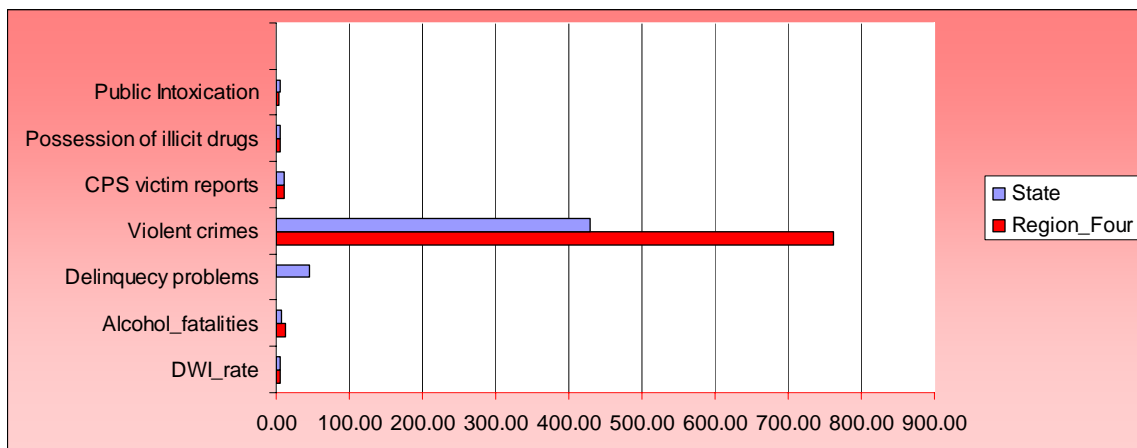
Region 3 Focus Groups

- Alcohol use is frequent.
- It does not cause a problem.
- They drink and drive.
- They are aware of consequences.
- Laws are well enforced.
- They drink to get drunk.
- It is okay to drink if you are only driving one to two blocks.
- Do not realize how drunk they are before getting in the car.
- The designated driver is the most sober.
- Some people just chance it.
- There are no bars within walking distance [of school].
- Busy highway separating bars from school.
- School offers free cabs but the wait is usually an hour.
- Males see it as a sign of weakness.
- Do not want to make their friends/girlfriends walk home.
- Strong police presence next to the “drunk bus”.
- Minors often drink heavily and quickly before they go out.
- Minors and sorority girls drink fast at bars.
- It is normal to drink a lot of drinks in one evening.
- Students disagreed with the definition of “binge” drinking.
- It is too conservative.

TX Public Health Region 4



Region 4 of the Texas Department of Health and Human Services includes 23 counties in the very northeast corner of Texas. This region had a 2004 population of 1,504,590 residents. Residents of this rural area of Texas are mostly rural and have limited services to either health or social services. There are two moderately large population centers for this region, Gregg and Smith counties, which account for more than 300,000 of the total population.



TX Public Health Region 4

Indicator Data Element	Data Element Description	Regional Level
2004 Population	Sum of 2004 Census figures for counties in region	1,054,590
DWI rates (/ 1,000 pop.)	Total DWI Arrests in region * 1,000 / region pop.	4.74
Alcohol related vehicular fatalities (/ 1,000 pop.)	Total Fatalities in region * 1,000 / region pop. Reported per 100,000 because of small numbers.	12.9
Youth delinquency/school behavior problems	Juvenile referrals for "liquor" and dangerous drugs per 100K population	3.6
Violent crimes per year	Total violent crimes in region * 100,000 / region pop.	762
Family/social bonding indicator	CPS victims per 1,000 children	15.58
Possession of illicit drugs	Total arrests for possession of illicit drugs*1,000 region population	5.14
Public Intoxication	Total arrests for public intoxication*1,000 region population	4.01

Region 4 Focus Groups

The most common social norm was overall social acceptance. Alcohol is present at most social events and many adults see drinking as a rite of passage for youth.

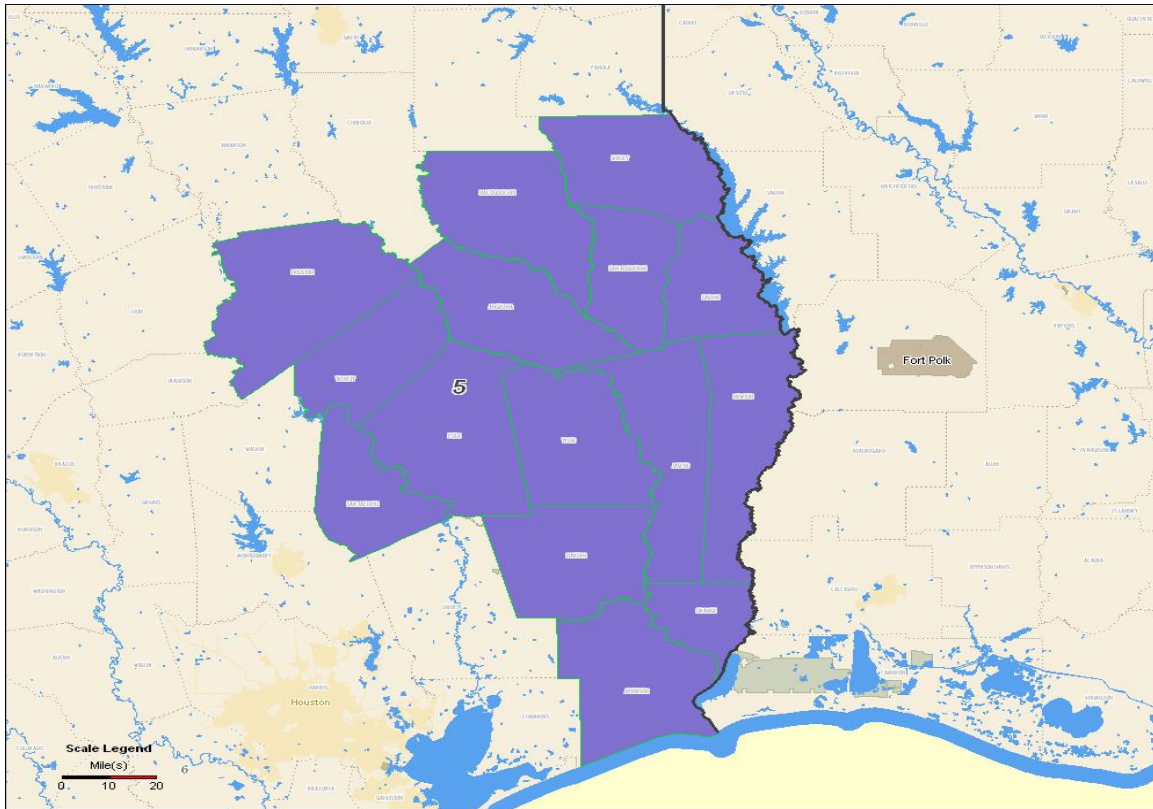
With college age youth, binge drinking is fueled by frequent partying, accessibility to alcohol and older friends and siblings providing to underage drinker.

- Many college age drinkers believe you can't get drunk off five beers, so binge drinking must involve much more than that.
- Kids can not have fun at a party unless they drink.

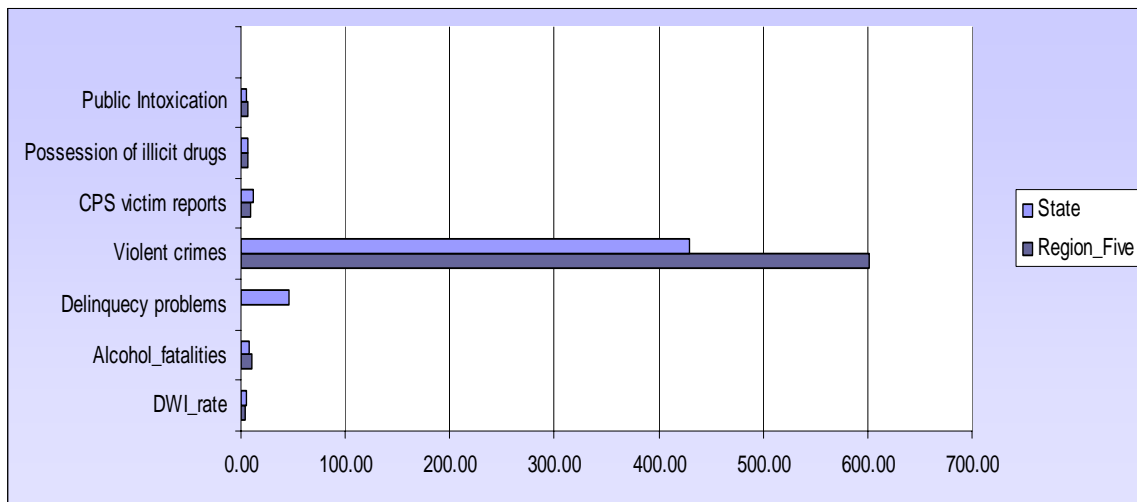
Alcohol sales laws are enforced however it depends upon local law enforcement and the DA and who you are.

- Several people believed that you can drink and drive several times before any consequences occur.
- All agreed that it is easy to get alcohol

TX Public Health Region 5



Region 5 of the Texas Department of Health and Human Services includes 15 counties in the very northeast corner of Texas. This region had a 2004 population of 752,098 residents. Residents of this region of east Texas are mostly rural and have limited services to either health or social services except in Jefferson County, where residents have access the services of the metropolitan Beaumont area. Beaumont is the only large residential area in this region, although several communities have higher education programs (Nacogdoches and Lufkin). The rest of the area is rural, low population density and poor.



TX Public Health Region 5

Indicator Data Element	Data Element Description	Regional Level
2004 Population	Sum of 2004 Census figures for counties in region	752,098
DWI rates (/ 1,000 pop.)	Total DWI Arrests in region * 1,000 / region pop.	3.37
Alcohol related vehicular fatalities (/ 1,000 pop.)	Total Fatalities in region * 1,000 / region pop. Reported per 100,000 because of small numbers.	11.0
Youth delinquency/school behavior problems	Juvenile referrals for "liquor" and dangerous drugs per 100K population	3.33
Violent crimes per year	Total violent crimes in region * 100,000 / region pop.	601.44
Family/social bonding indicator	CPS victims per 1,000 children	12.8
Possession of illicit drugs	Total arrests for possession of illicit drugs*1,000 region population	6.36
Public Intoxication	Total arrests for public intoxication*1,000 region population	6.16

Region 5 Focus Groups

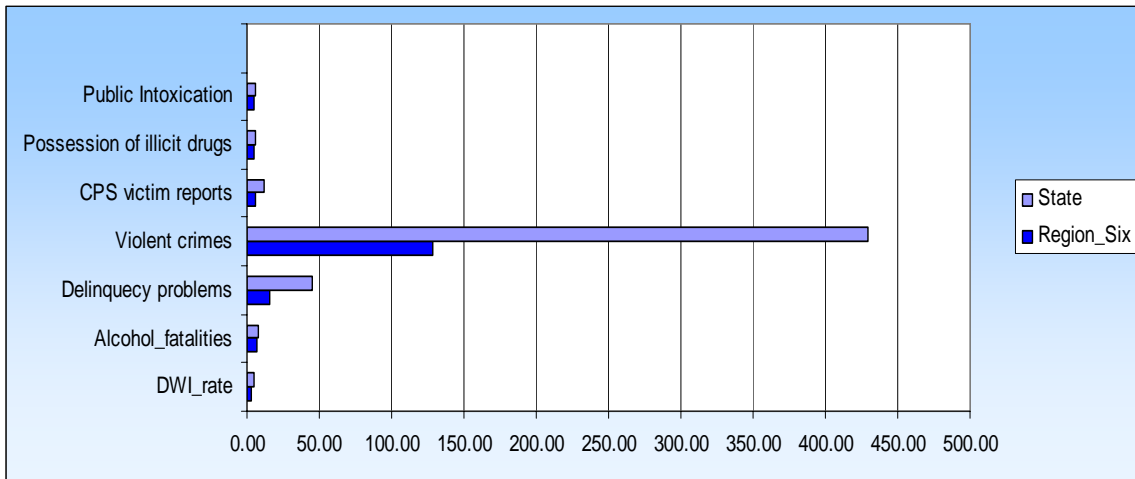
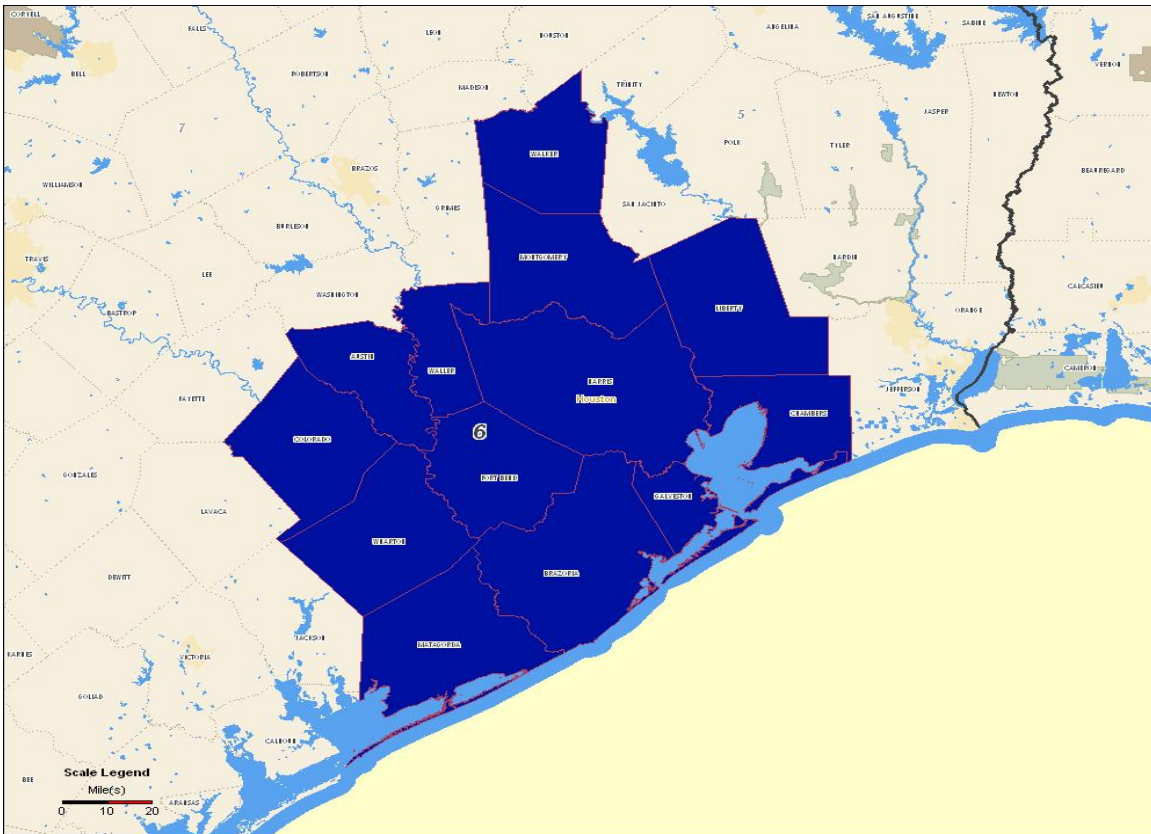
The most common social norm was overall social acceptance. Small town mentality and businesses who encourage excess. Many young people think drinking is expected of them. "My father drinks too much, so I will too."

With college age youth, binge drinking is fueled by frequent partying, accessibility to alcohol and older friends and siblings providing to underage drinker.

Many college age drinkers believe you cannot get drunk off five beers, so binge drinking must involve much more than that. Kids cannot have fun at a party unless they drink.

Alcohol sales laws are enforced but there are a lot of fake IDs out there. Several people believed that that youth are exempt from adult responsibility and adults do not hold youth responsible. All agreed that it is VERY easy to get alcohol.

TX Public Health Region 6



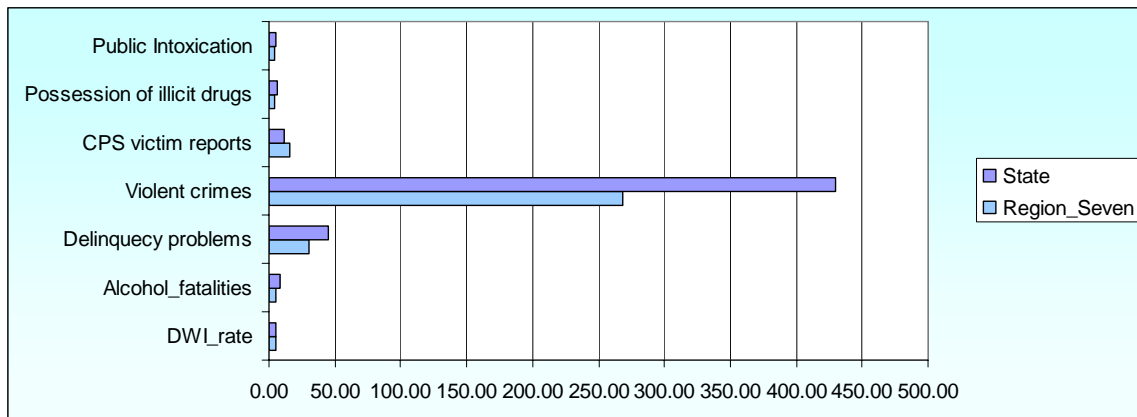
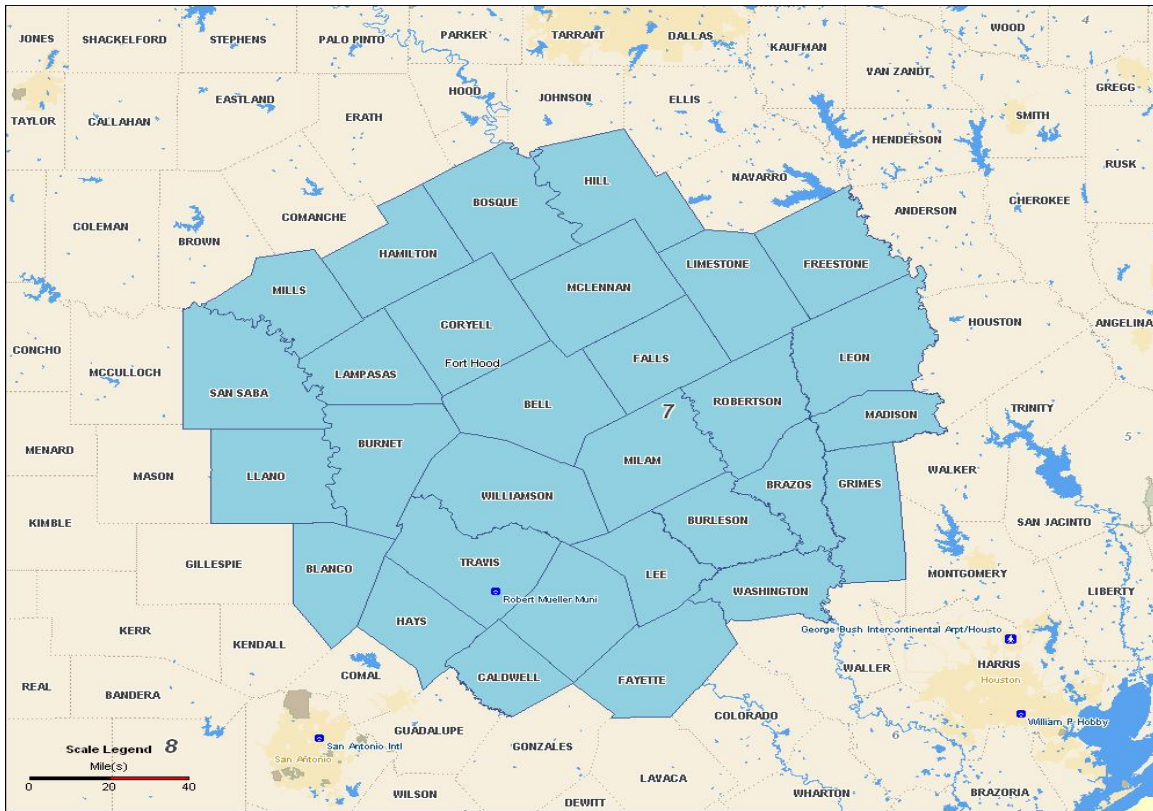
TX Public Health Region 6

Indicator Data Element	Data Element Description	Regional Level
2004 Population	Sum of 2004 Census figures for counties in region	5,416,840
DWI rates	Total DWI Arrests in region * 1,000 / region pop.	3.24
Alcohol related vehicular fatalities (/ 100,000 pop.)	Total fatalities in region * 100,000 / region pop.	7.2
Binge drinking	Percent at risk	31.00%
Current 30 day drinking rate	Estimate of percent of population	53.98%
Current 30 day other illicit drug use	Estimate of percent of population	14.33%
Perceptions of harmfulness of use	Estimate of percent of population	42.68%
Youth delinquency/school behavior problems	Percent of total school related delinquencies with report substance abuse	3%
Violent crimes per year	Total violent crimes in region * 1000 / region pop.	1.28
Family/social bonding indicator	CPS victims per 1,000 children	6
Possession of illicit drugs	Percent of total arrests	5.26%
Public Intoxication	Percent of total arrests	5.39%
Availability of Alcohol	Alcohol Licenses per 1000	14.99

Region 6 Focus Groups

- Consumption of alcohol was very much a part of the culture of the entire region
 - Culturally, the “shoulder tap” or a youth asking a stranger to buy beer or alcohol is very common in the region.
 - There is also a family component that says it alright to drink as long as it is at home or under family supervision
 - Much of the consumption at community celebrations is encouraged by sponsorship by alcohol companies
- On college campuses alcohol consumption is often looked upon as a “right of passage” among the students.
 - Many college students equate the definition of binge drinking to what is considered normal drinking
 - A particular concern among group members is the new trend of 21 shots on the night of the college student’s 21st birthday.
- Alcohol sales laws are enforced as well as can be expected given the shortage of TABC officers and the sheer number of licensed outlets in the region.
 - Law enforcement sees its job as immediate safety before enforcement of alcohol sales laws
 - Some concerns as to equity in law enforcement
 - Infrastructure concerns such densely populated suburban area FR1960 between I- 45 & 249, no median or turn lanes, In the rural areas speeding, 2 lane rural roads, culverts, and deep ditches

TX Public Health Region 7



TX Public Health Region 7

Indicator Data Element	Data Element Description	Regional Level
2004 Population	Sum of 2004 Census figures for counties in region	2,516,696
DWI rates (/ 1,000 pop.)	Total DWI Arrests in region * 1,000 / region pop.	5.2
Alcohol related vehicular fatalities (/ 1,000 pop.)	Total Fatalities in region * 1,000 / region pop.	0.5
Youth delinquency/school behavior problems	Percent of total delinquencies	30.7
Violent crimes per year	Total violent crimes in region * 100,000 / region pop.	127.3
Family/social bonding indicator	CPS victims per 1,000 children	16.0
Possession of illicit drugs	Total arrests per 1,000 people	4.4
Public Intoxication	Total arrests per 1,000 people	3.9
Total number of evidence based programs	Total number of programs	24
Evidence of culturally based programs	Total number of programs	6

Region 7 Focus Groups

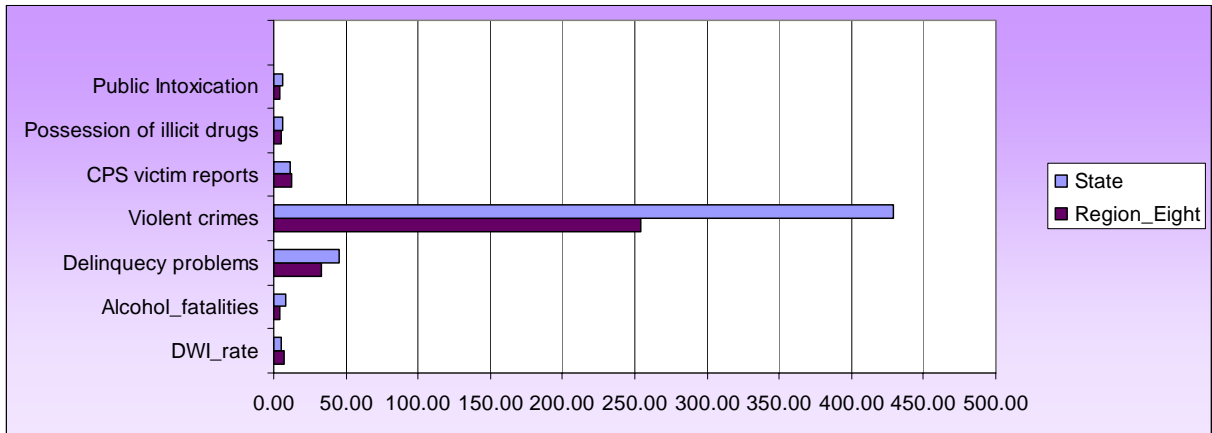
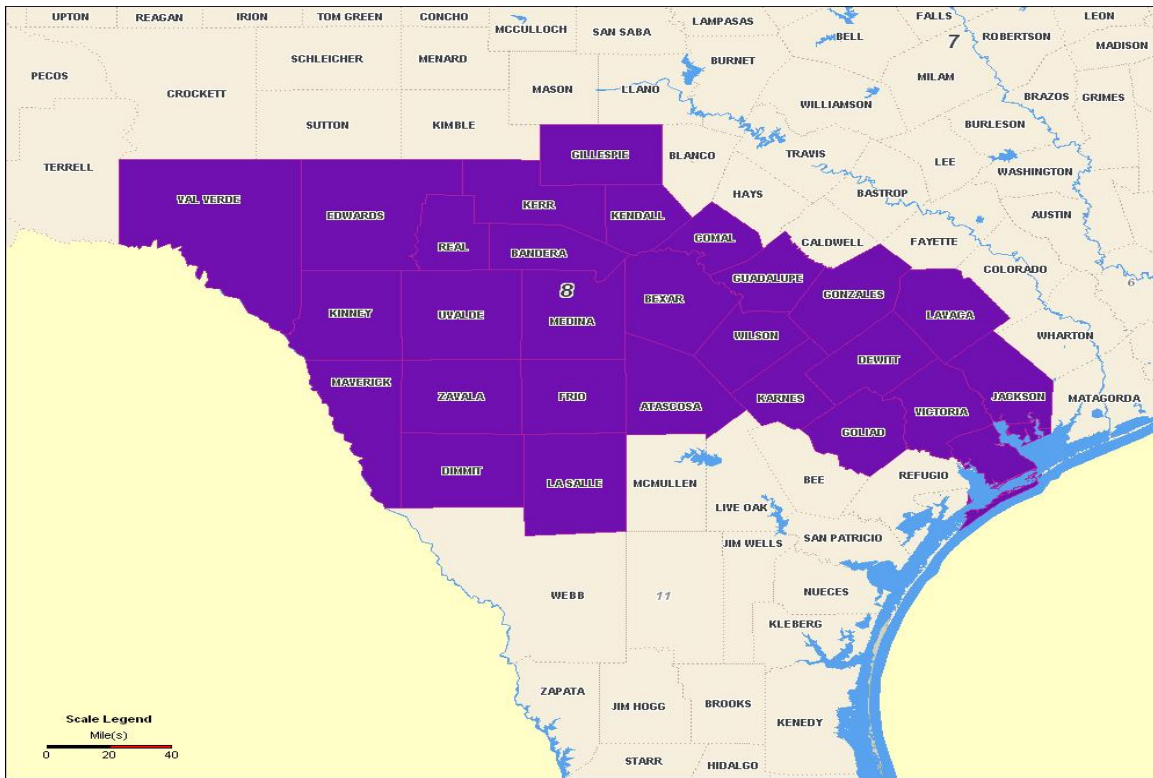
Findings

- Underage drinking and binge drinking are widespread and difficult to control and prevent; many factors—norms, adult behaviors, advertising, accessibility and availability among them—promote drinking in general; few positive alternatives exist; knowledge of consequences seems limited; law enforcement is only part of the answer.

Recommendations

- Consumption – at present, only the case for more knowledge, better publicity surrounding the issues and more alternative, non-alcohol, events and celebrations are the recommended options; more will be developed
- Consequences – are not widely understood or recognized, so better education activities are high priorities; direct programs such as designated drivers, public transportation availability and better enforcement are seen as strong candidates for reducing consequences; little note was made of individual responsibility

TX Public Health Region 8



TX Public Health Region 8

Indicator Data Element	Data Element Description	Regional Level
2004 Population	Sum of 2004 Census figures for counties in region	2,298,522
DWI rates (/ 1,000 pop.)	Total DWI Arrests in region * 1,000 / region pop.	6.8
Alcohol related vehicular fatalities (/ 1,000 pop.)	Total Fatalities in region * 1,000 / region pop.	0.4
Youth delinquency/school behavior problems	Percent of total delinquencies	33.2
Violent crimes per year	Total violent crimes in region * 100,000 / region pop.	104.0
Family/social bonding indicator	CPS victims per 1,000 children	12.3
Possession of illicit drugs	Total arrests per 1,000 people	5.1
Public Intoxication	Total arrests per 1,000 people	4.1
Total number of evidence based programs	Total number of programs	16
Evidence of culturally based programs	Total number of programs	4

Region 8 Focus Groups

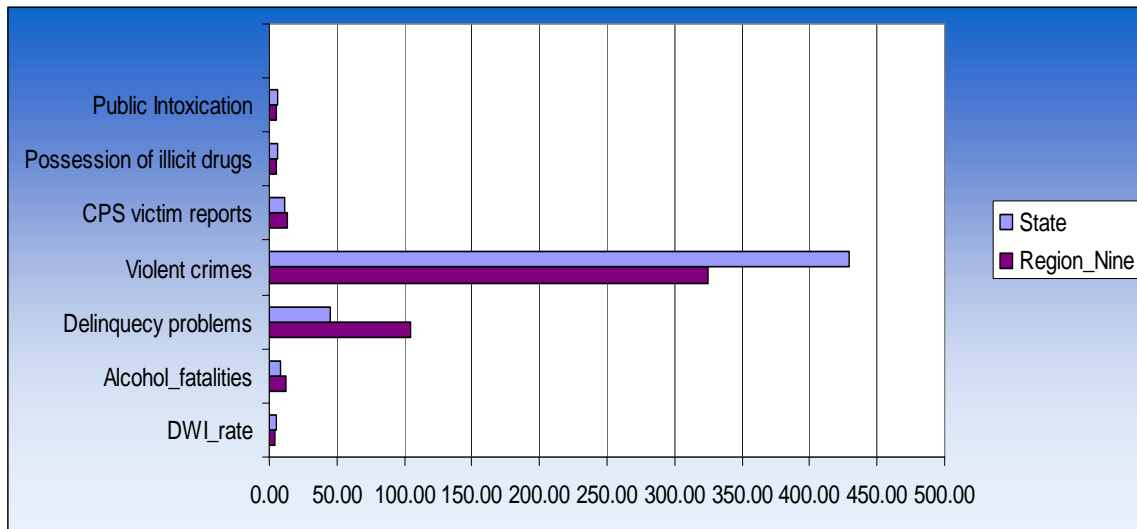
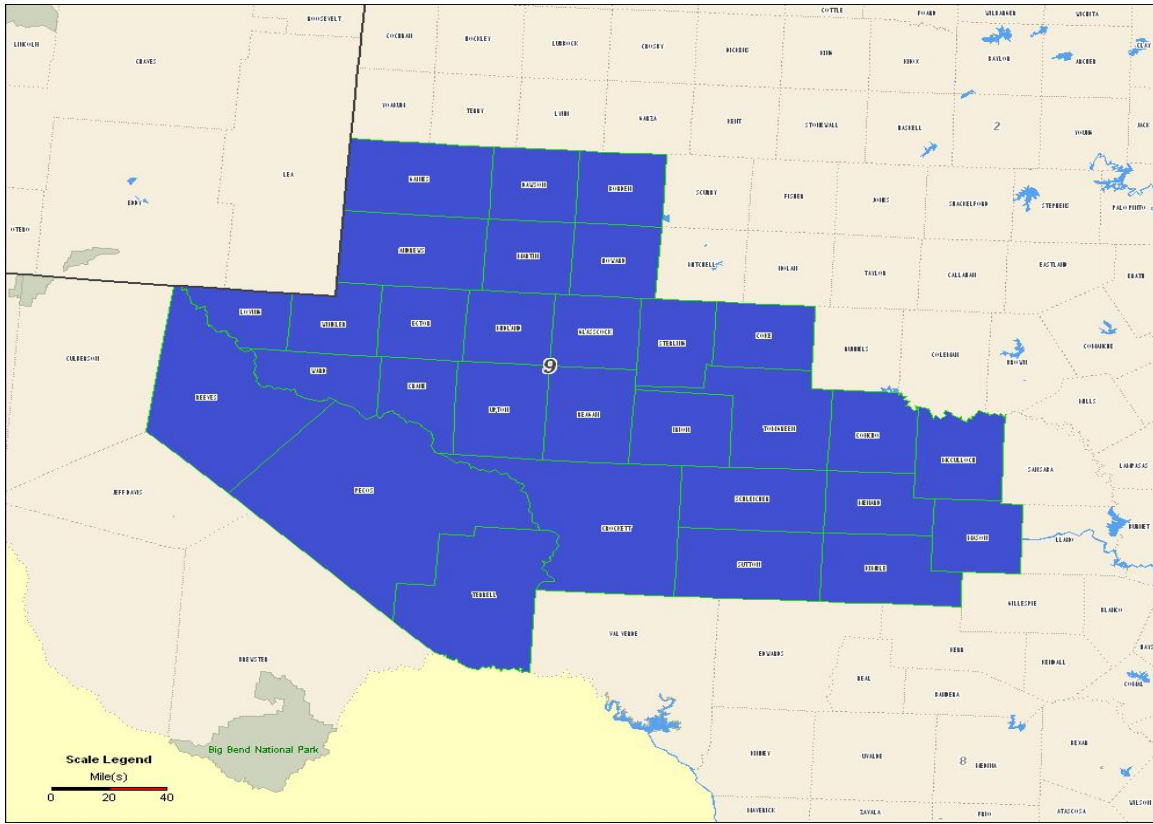
Findings

- Underage drinking and binge drinking are widespread and difficult to control and prevent; many factors—norms, adult behaviors, advertising, accessibility and availability among them—promote drinking in general; few positive alternatives exist; knowledge of consequences seems limited; law enforcement is understaffed and intermittent—when implemented it is very successful, witness the huge reduction in violations at NIOSA; at the same time, however, most festivals, holidays and sporting events in San Antonio feature alcohol consumption as a major part; some Hispanic participants blame their culture, but members of other cultural groups were quick to “own up” to their own problems revolving around the use of alcohol

Recommendations

- Consumption – at present, only the case for more knowledge, better publicity surrounding the issues and more alternative, non-alcohol, events and celebrations are the recommended options; more will be developed
- Consequences – consequences are widely understood due to a high awareness of media programs locally; nonetheless, better, different, more-“personalized” education activities are high priorities; direct programs such as designated drivers, public transportation availability, non-alcohol “competition” with traditional events and better enforcement are seen as strong candidates for reducing consequences; little note was made of individual responsibility; some dissatisfaction voiced regarding uneven enforcement—“influenced by affluence”—one judge present pledged to work on fellow judges

TX Public Health Region 9



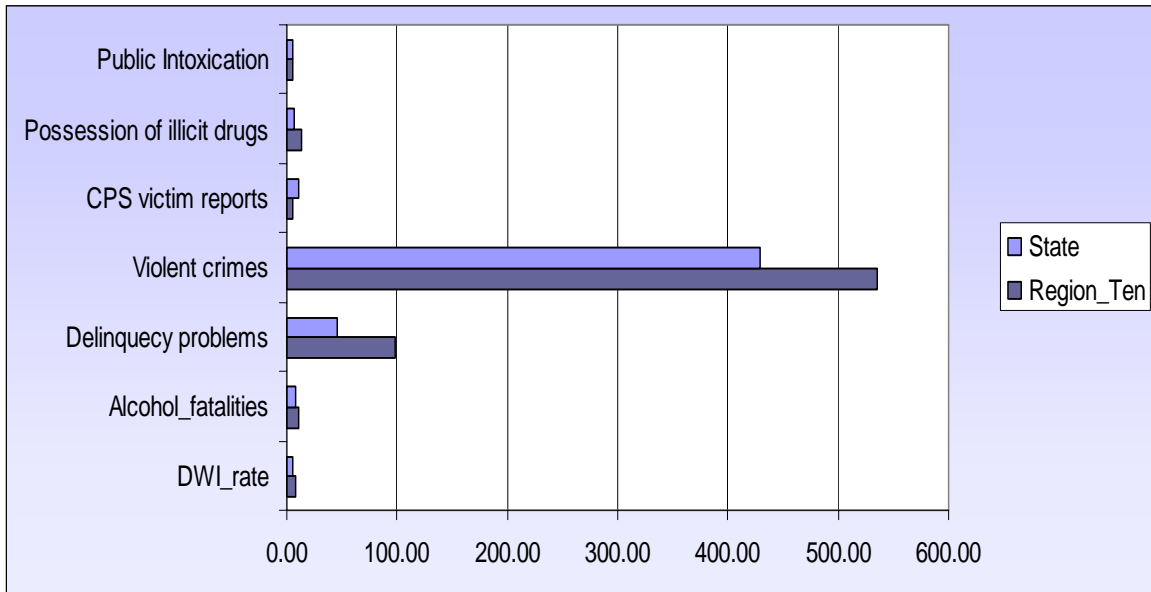
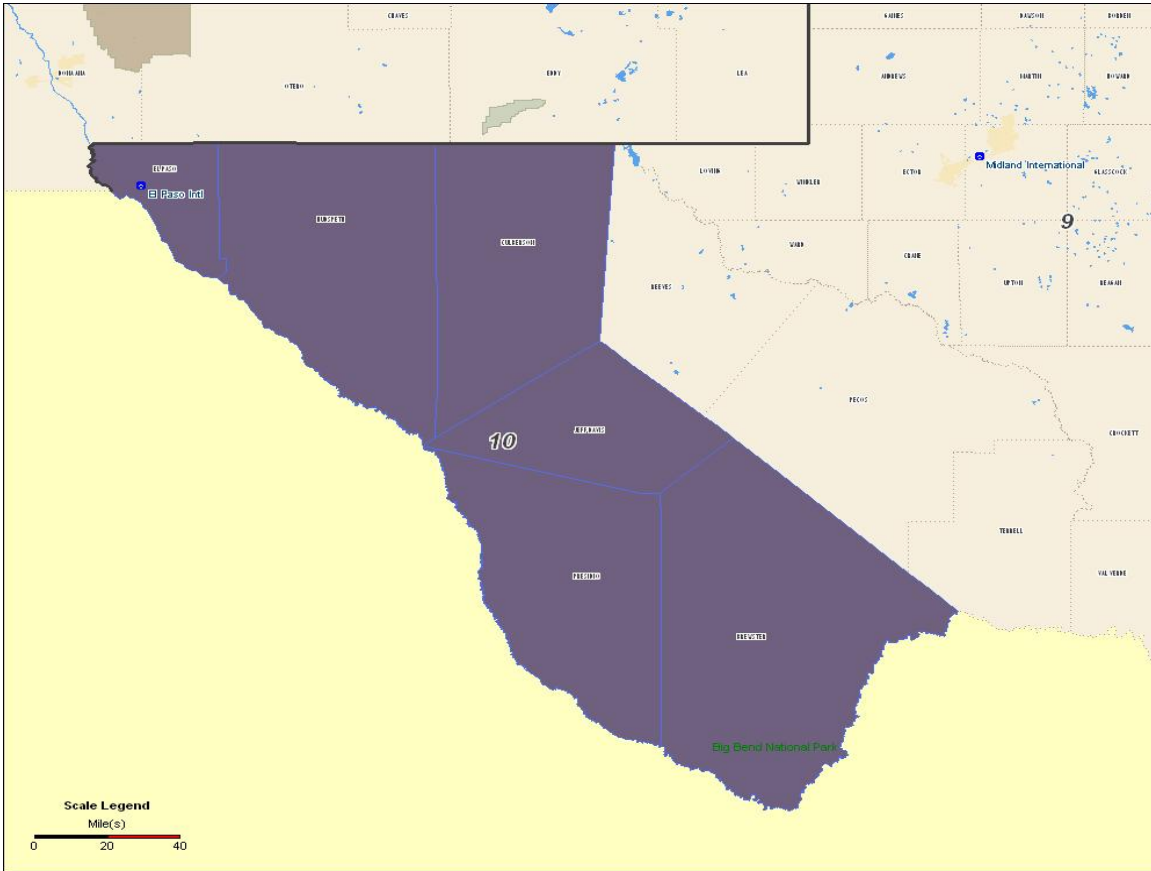
TX Public Health Region 9

Indicator Data Element	Data Element Description	Regional Level
2004 Population	Sum of 2004 Census figures for counties in region	527,172
DWI rates (/ 1,000 pop.)	Total DWI Arrests in region * 1,000 / region pop.	4.62
Alcohol related vehicular fatalities (/ 1,000 pop.)	Total Fatalities in region * 1,000 / region pop. [Used per 100,000 pop, because per 1,000 left a very small number]	30.92
Youth delinquency/school behavior problems	Juvenile referrals for "liquor" and "dangerous drugs" per 100K pop	104.52
Violent crimes per year	Total violent crimes in region * 100,000 / region pop.	324.8
Family/social bonding indicator	CPS victims per 1,000 children	13.5
Possession of illicit drugs	Total arrests for possession of illicit drugs * 1,000 / region pop.	4.7
Public Intoxication	Total arrests for public intoxication * 1,000 / region pop.	5.3

Region 9 Focus Groups

- Most cited underage & binge drinking, drunk driving/DWI's as major alcohol-related issues
- Contributions to alcohol-related car crashes were underage, inexperienced drivers, DWI, social drinking (parties, Happy Hour, graduation
- Social norms that encourage: tradition/way of life/intergenerational, peer pressure, media influences
- Social norms that discourage: school, community, and law enforcement awareness/prevention programs; church youth programs; local agency programs
- Most thought that young people drink & drive because of peer pressure, they think they're invincible, lack of parental/adult supervision, lack of alternative activities
- All respondents reported alcohol is easily available: friends, siblings, parents (directly or being left in home), family, other adults, "illegal means"
- Almost all respondents thought the laws, alcohol code violations, and DWI are as well enforced as possible, given law enforcement limitations
- All said young people are aware of the consequences, but the respondents didn't believe young people believed it would happen to them
- There were slight mixed, but somewhat consistent, responses about different cultural expectations: 80% said yes, 20% said no

TX Public Health Region 10



TX Public Health Region 10

Indicator Data Element	Data Element Description	Regional Level
2004 Population	Sum of 2004 Census figures for counties in region	740,795
DWI rates (/ 1,000 pop.)	Total DWI Arrests in region * 1,000 / region pop.	7.54
Alcohol related vehicular fatalities (/ 1,000 pop.)	Total Fatalities in region * 1,000 / region pop. [Used per 100,000 pop, because per 1,000 left a very small number]	10.12
Youth delinquency/school behavior problems	Juvenile referrals for "liquor" and "dangerous drugs" per 100K pop	98.54
Violent crimes per year	Total violent crimes in region * 100,000 / region pop.	534.8
Family/social bonding indicator	CPS victims per 1,000 children	5.8
Possession of illicit drugs	Total arrests for possession of illicit drugs * 1,000 / region pop.	13.8
Public Intoxication	Total arrests for public intoxication * 1,000 / region pop.	5.7

Region 10 Focus Groups

- 14 participants, mostly Hispanic, mostly community stakeholders
- Most cited underage & binge drinking, DWI's, earlier onset, and border issues as major alcohol-related issues
- Contributions to alcohol-related car crashes were easy availability, DWI, speeding while drunk, recklessness
- Social norms that encourage: parties (graduations, weddings, baptisms, quinceaneras, backyard beer parties); rite of passage; parents who have "house parties"; Juarez 18 is legal limit
- Social norms that discourage: media, prevention programs, and adults who discourage drinking; community and school programs
- Most thought that young people drink & drive because they do not acknowledge the consequences (do not think they are impaired, think they are invincible, do not believe anything will happen to them)
- All respondents reported alcohol is easily available: border, adults, parties (desert parties, home parties)
- Most respondents thought the laws and DWI are well enforced, but there were more concerns about how well alcohol code violations are being enforced
- Most said young people are aware of the consequences, but do not believe they will suffer them
- 2/3 believed there were different cultural expectations in the use of alcohol, but 1/3 believed there were not

TX Public Health Region 11

Indicator Data Element	Data Element Description	Regional Level
2004 Population	Sum of 2004 Census figures for counties in region	1,908,305
DWI rates	Total DWI Arrests in region * 1,000 / region pop.	4.33
Alcohol related vehicular fatalities (/ 100,000 pop.)	Total fatalities in region * 1,000 / region pop.	7.07
Binge drinking	Percent at risk	17.30%
Current 30 day drinking rate	Estimate of percent of population	35.30%
Current 30 day other illicit drug use	Estimate of percent of population	4.41%
Perceptions of harmfulness of use	Estimate of percent of population	51.46%
Future intentions not to use	Percent of survey sample	
Youth delinquency/school behavior problems	Percent of total school related delinquencies with report substance abuse	16.6%
Violent crimes per year	Total violent crimes in region * 1000 / region pop.	2.16
Family/social bonding indicator	CPS victims per 1,000 children	9.21
Possession of illicit drugs	Percent of total arrests	4.75%
Public Intoxication	Percent of total arrests	8.27%
Availability of Alcohol	Alcohol Licenses per 1000	2.20

Region 11 Focus Groups

- Consumption of alcohol was very much a part of the culture of the entire region
 - Easy access and the lower cost of alcohol across the border
 - Many community and entertainment events serve alcohol.
 - High poverty rates leading to ineffective coping skills may explain elevated levels of binge drinking.
 - “In our community it is the norm to serve alcohol at baptisms, children’s birthday parties, first communion celebrations, weddings, anniversary parties, etc.”
- College aged alcohol consumption is influenced by the resort areas along the Gulf Coast and Border
 - North and South Padre Island resort areas are popular spring break destinations
 - Seen as “good business” for local establishments
 - Large nightclubs, with 3 or more serving bars, often overcrowded conditions, special pricing leads to unmonitored consumption
- Enforcement of liquor law seen as “spotty” in the Region
 - Some areas see DWI enforcement as improving, but the more it improves the greater the workload for the District Attorney and probation officers
 - Alcohol sales laws rarely enforced by local law enforcement
 - Valley metro-plex is fast growing and physical infrastructure receive more attention than social infrastructure

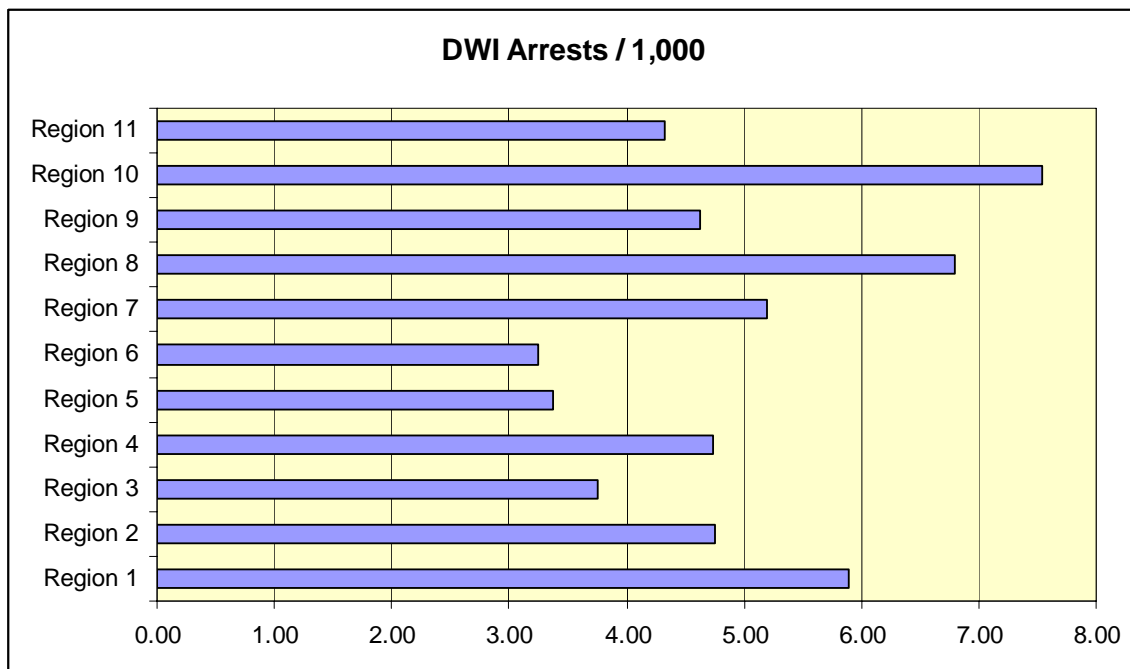
Summary of Key Epidemiological Data Elements

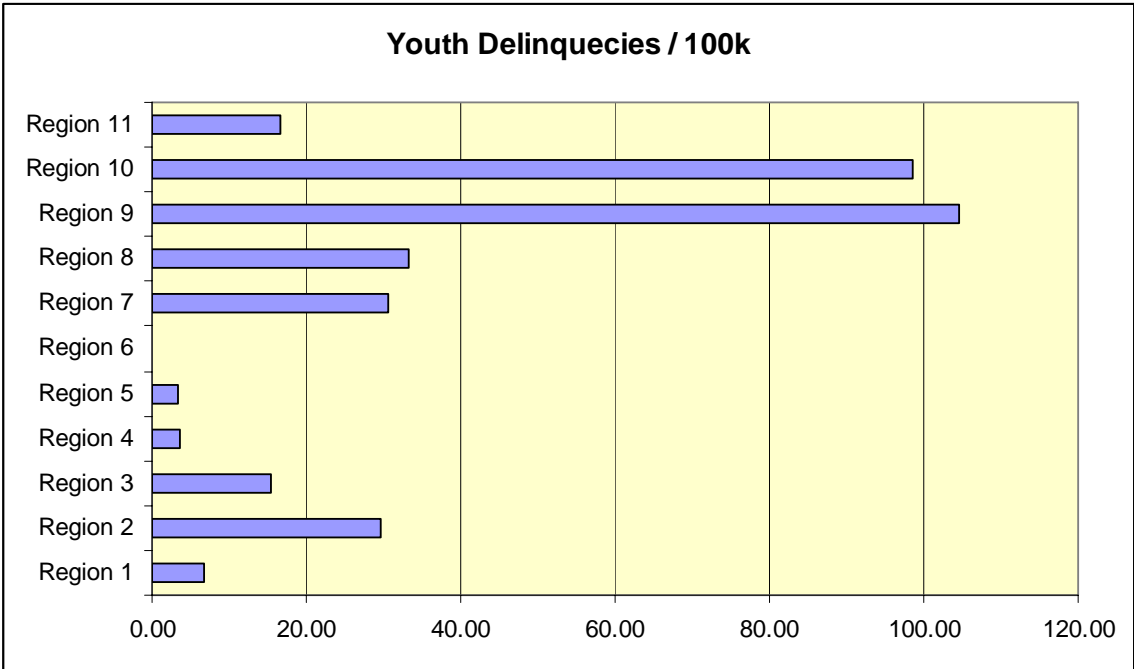
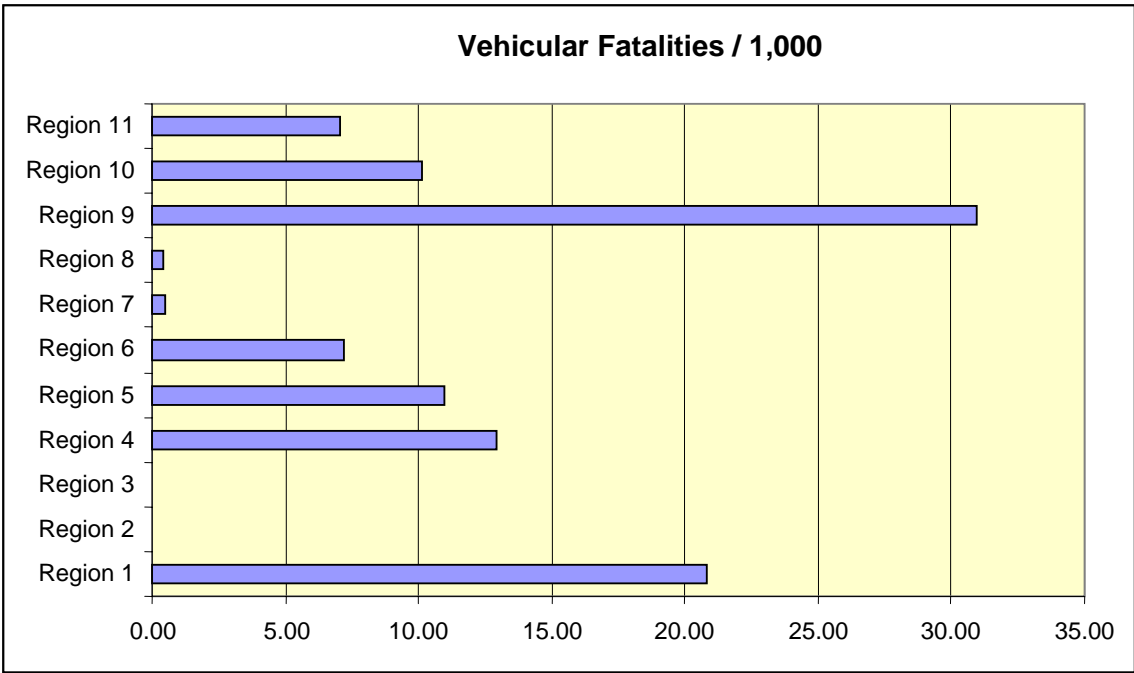
Each region was asked to explore the needs in each of the areas defined in the SPF SIG logic model, that is, consequence, consumption, and intervening variables.

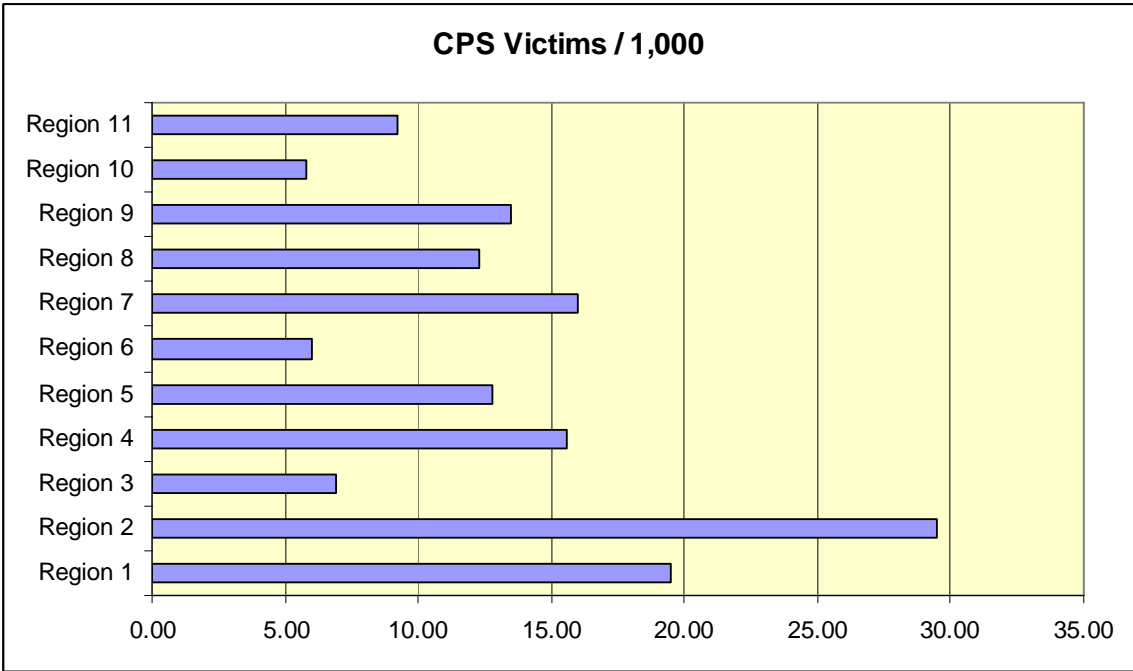
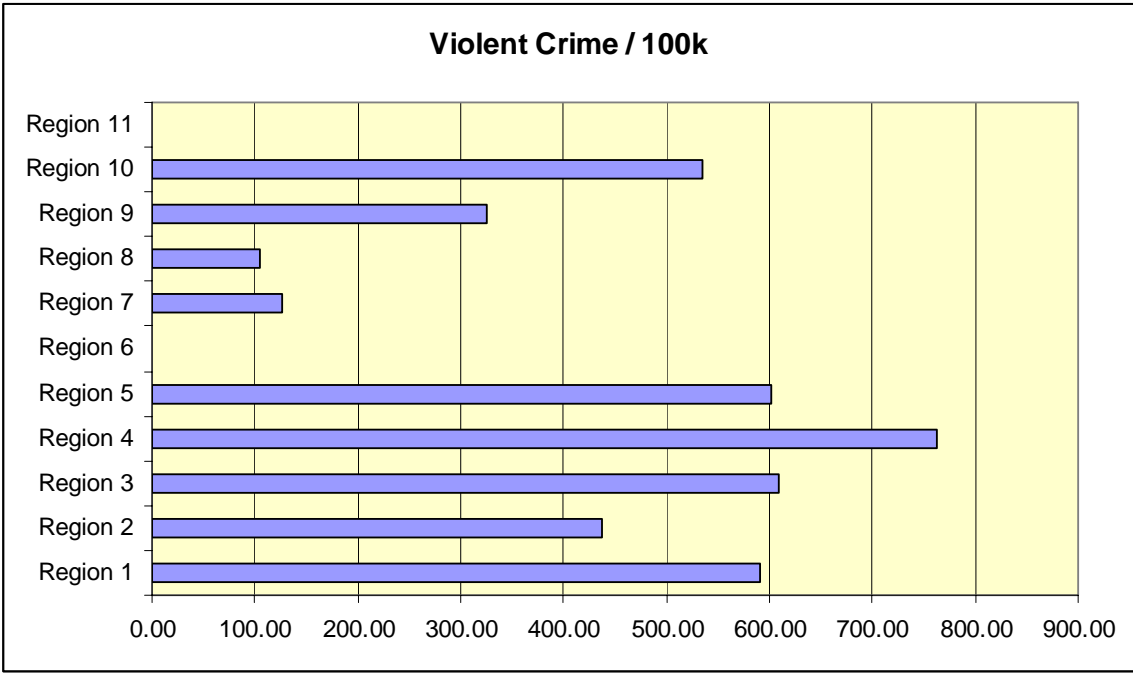
Consequences may be defined as the ultimate outcome: mortality; crashes; and increased alcohol or drug use, and may serve as alternative empirical measures to intervening variables (i.e. easy retail access, low enforcement, low perceived risk, etc.).

Examining the results of these efforts across each of the eleven health regions, similarities are apparent regardless of area size or geography. It may be said, therefore, that a significant improvement in one region may contribute to improvement or in “moving the needle” statewide.

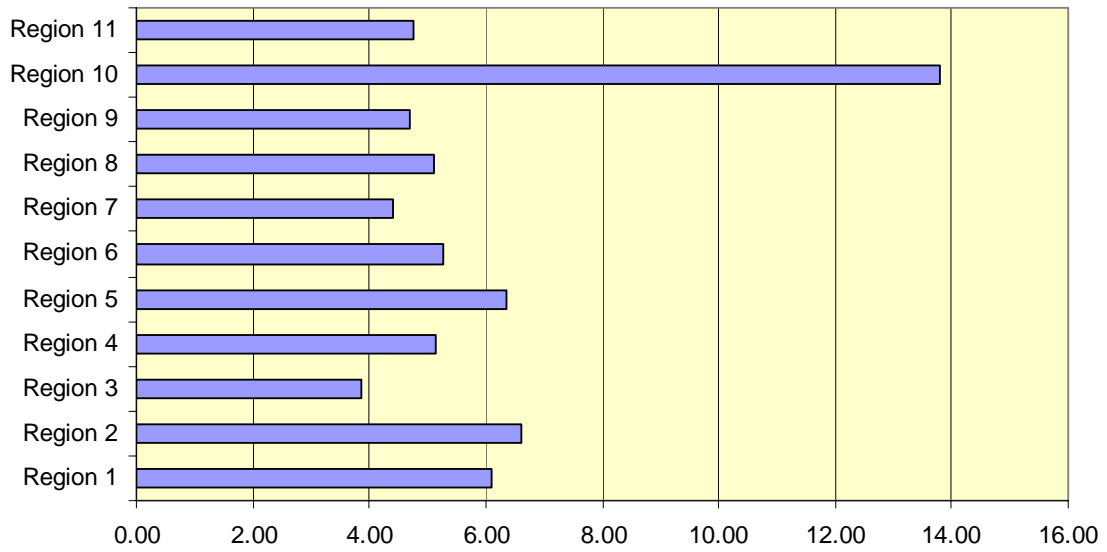
The following provides a regional comparison in each for the key epidemiological data elements.







Arrests for Possession of Illegal Drugs / 1,000



Arrests for Public Intoxication / 1,000

